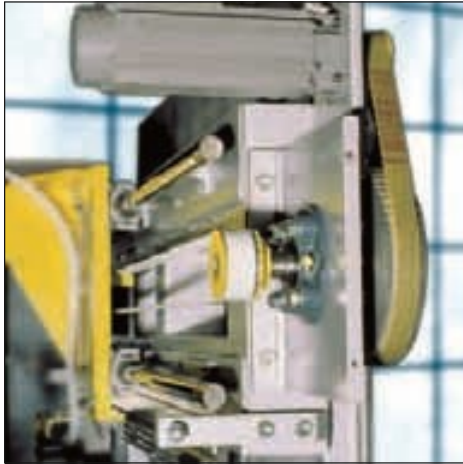


***MEGAPOWER PU endless timing belts***



# MEGAPOWER PU endless timing belts



**MEGAPOWER** timing belts are manufactured by a unique thermoset moulding process.

The high-grade polyurethane gives excellent abrasion and shear resistance, combined with a variety of graded steel cords, ensuring high strength and tractive resistance. The result is a timing belt with excellent dimensional stability. Megapower moulded timing belts are manufactured to a tight tolerance range, which assures consistent length and thickness.

The combination of these factors results in Megapower, performing to the highest physical and chemical levels.

Special compounds and cords have to be tested and homologated on the application. Megadyne is not responsible for wrong functioning of special products.

**MEGAPOWER PU** belts are suitable for high power, precision motion and control even with high speed.

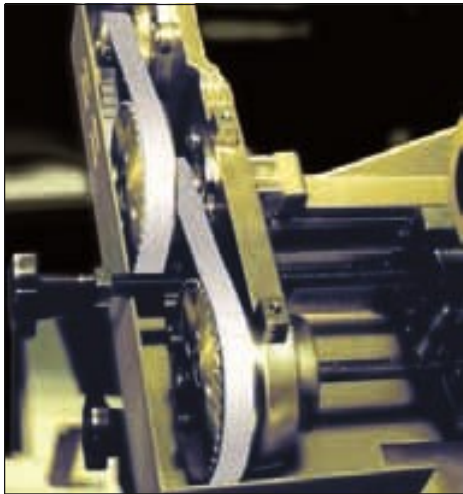
These belts have the following features:

## **MECHANICAL features**

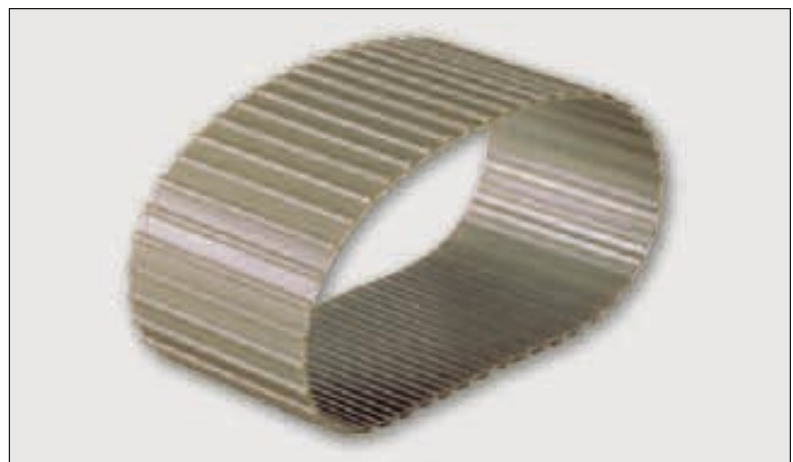
- Consistent dimensional stability
- Low pre-tension
- Low noise
- High abrasion resistance
- Low maintenance
- High flexibility
- Linear speeds up to 80 m/sec

## **CHEMICAL features**

- Good resistance to
  - Aging,
  - Hydrolysis,
  - UVA rays,
  - Ozone
- Working temperature: -25 °C to +80 °C (up to +110 °C for short periods)
- High resistance to oils, fats and greases
- Good resistance to most acids and Alkalis

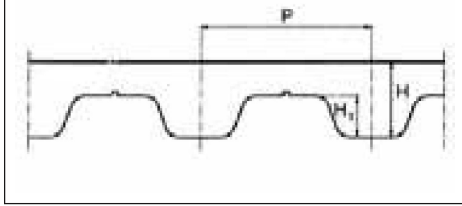


**MEGAPOWER PU** belts perform especially well on light synchronised and stepped drives, in office automation and domestic appliance applications.

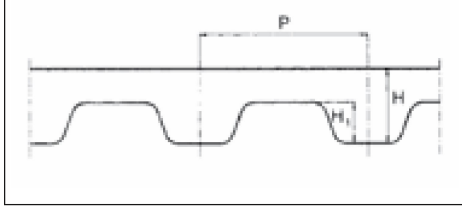


# MEGAPOWER PU endless timing belts

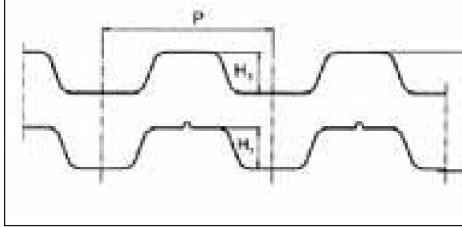
## T2 - T2.5 - T5 - T10



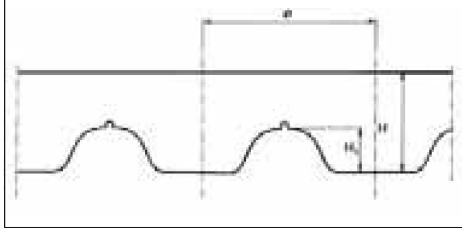
## T5 - T10\* available without nose



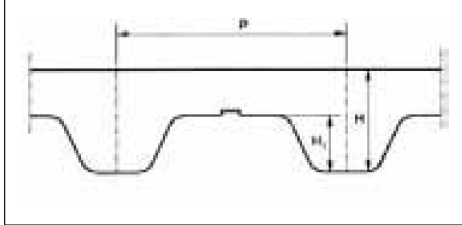
## T2.5 DL - T5 DL - T10 DL



## AT5 - AT10



## MXL - XL - L - H



T2.5	
Std. width (mm)	
4/6/8/10/12	

T5	
Std. width (mm)	
6/8/10/12/16/20/25	

T10	
Std. width (mm)	
10/12/16/20/25/32/50/75	

T2.5 DL	
Std. width (mm)	
4/6/8/10/12	

T2.5	
Code	Pitch length (mm)
120	120
145	145
160	160
177,5	177,5
180	180
200	200
210	210
225	225
245	245
250	250
255	255
260	260
270	270
275	275
280	280
290	290
300	300
305	305
317,5	317,5
330	330
342,5	342,5
380	380
420	420
480	480
500	500
540	540
600	600
620	620
650	650
680	680
700	700
780	780
880	880
915	915
950	950
1185	1185

T5	
Code	Pitch length (mm)
120	120
150	150
165	165
180	180
185	185
200	200
210	210
215	215
220	220
225	225
245	245
250	250
255	255
260	260
270	270
275	275
280	280
295	295
300	300
305	305
330	330
340	340
350	350
355	355
365	365
375	375
390	390
400	400
410	410
420	420
425	425
440	440
445	445
450	450
455	455
460	460
475	475
480	480
500	500
510	510
515*	515*
525	525
545	545
550	550
560*	560*
575	575
590	590
600	600
610	610
620	620
630	630
640	640
650	650
660	660
675	675
690	690
700	700
720	720
725	725
750	750
765	765
780	780
800	800
815	815
830	830
840	840
850	850
860	860
885	885
900	900
920	920
940	940
990	990
1075	1075
1100	1100
1160	1160
1200	1200
1215	1215
1275	1275
1280	1280
1315	1315
1355	1355
1380	1380
1440	1440
1470	1470
1500	1500
1580	1580
1955	1955

T10	
Code	Pitch length (mm)
260	260
320	320
340	340
370	370
390	390
400	400
410	410
440	440
450	450
480	480
500	500
530	530
550	550
560	560
600	600
600*	600*
610	610
630	630
630*	630*
650	650
660	660
680	680
690	690
700	700
720	720
720*	720*
730	730
750	750
780	780
800*	800*
810	810
840	840
850	850
880	880
890	890
900	900
900*	900*
910	910
920	920
920*	920*
950	950
960	960
970	970
980	980
1000	1000
1010	1010
1050	1050
1080	1080
1100	1100
1110	1110
1140	1140
1150	1150
1200	1200
1210	1210
1240	1240
1250	1250
1300	1300
1320	1320
1350	1350
1390	1390
1400	1400
1420	1420
1440	1440
1450	1450
1460	1460
1500	1500
1560	1560
1600	1600
1610	1610
1700	1700
1750	1750
1780	1780
1880	1880
1960	1960
2250	2250

T2.5 DL	
Code	Pitch length (mm)
457,5 DL	457,5
P	2,5
H	1,3
H <sub>i</sub>	0,7

T5 DL	
Std. width (mm)	
6/8/10/12/16/20/25	

T5 DL	
Code	Pitch length (mm)
410 DL	410
460 DL	460
525 DL	525
590 DL	590
620 DL	620
685 DL	685
700 DL	700
750 DL	750
815 DL	815
840 DL	840
860 DL	860
940 DL	940
1100 DL	1100

P	5
H	2,2
H <sub>i</sub>	1,2

T10 DL	
Std. width (mm)	
10/12/16/20/25/32/50/75	

T10 DL	
Code	Pitch length (mm)
260 DL	260
530 DL	530
630 DL	630
660 DL	660
700 DL	700
720 DL	720
800 DL	800
840 DL	840
900 DL	900
920 DL	920
980 DL	980
1010 DL	1010
1100 DL	1100
1150 DL	1150
1210 DL	1210
1240 DL	1240
1250 DL	1250
1320 DL	1320
1350 DL	1350
1420 DL	1420
1610 DL	1610
1880 DL	1880

T2	
Std. width (mm)	
4/6/8/10/12	

T2	
Code	Pitch length (mm)
180	180
200	200
288	288

P	2
H	1,1
H <sub>i</sub>	0,5

P	5
H	2,2
H <sub>i</sub>	1,2

P	10
H	4,5
H <sub>i</sub>	2,5

P	10
H	4,5
H <sub>i</sub>	2,5

# MEGAPOWER PU endless timing belts

AT5	
Std. width (mm)	
6/8/10/12/16/20/25	

AT10	
Std. width (mm)	
10/12/16/20/25/32/50/75	

MXL	
Std. width (mm)	
3,2/4,8/6,4	

XL	
Std. width (mm)	
6,4/7,9/9,4	

L	
Std. width (mm)	
12,7/19,1/25,4	

H	
Std. width (mm)	
19,1/25,4/38,1/50,8/76,2	

AT5	
Code	Pitch length (mm)
225	225
255	255
275	275
280	280
300	300
330	330
340	340
375	375
390	390
420	420
450	450
455	455
480	480
500	500
525	525
545	545
600	600
610	610
620	620
630	630
660	660
670	670
710	710
720	720
750	750
780	780
825	825
860	860
975	975
1050	1050
1125	1125
1500	1500
2000	2000

P	5
H	2,7
H <sub>1</sub>	1,2

AT10	
Code	Pitch length (mm)
370	370
500	500
560	560
580	580
600	600
610	610
630	630
660	660
700	700
730	730
780	780
800	800
810	810
840	840
880	880
890	890
920	920
960	960
980	980
1000	1000
1010	1010
1050	1050
1080	1080
1100	1100
1150	1150
1190	1190
1200	1200
1210	1210
1220	1220
1230	1230
1240	1240
1250	1250
1280	1280
1300	1300
1320	1320
1350	1350
1360	1360
1400	1400
1420	1420
1480	1480
1500	1500
1600	1600
1630	1630
1700	1700
1720	1720
1800	1800
1860	1860
1940	1940

P	10
H	4,5
H <sub>1</sub>	2,5

MXL	
Code	Pitch length (mm)
80055	111,7
80057	115,8
80060	121,9
80070	142,2
80072	146,3
80075	152,4
80076	154,4
80079	160,5
80080	162,5
80082	166,6
80088	178,8
80091	184,9
80092	186,9
80096	195,1
80101	205,2
80102	207,2
80103	209,2
80105	213,3
80110	223,5
80114	231,6
80118	239,7
80120	243,8
80130	264,1
80132	268,2
80135	274,3
80140	284,4
80145	294,6
80150	304,8
80155	314,9
80175	355,6
80190	386,5
80200	406,8
80221	449,1
80256	520,1
80280	568,9
80285	579,1
80308	625,8
80332	674,6
80352	715,2
80360	731,5
80395	802,6
80405	822,9
80412	837,1
80432	877,8
80454	922,5
80485	985,5

P	2,032
H	1,2
H <sub>1</sub>	0,51

XL	
Code	Pitch length (mm)
60	152,4
70	177,8
76	193,0
80	203,2
90	228,6
100	254,0
110	269,4
120	304,8
130	330,2
134	340,3
140	355,6
150	381,0
160	406,4
170	431,8
180	457,2
190	482,6
194	492,7
200	508,0
210	533,4
220	558,8
230	584,2
240	609,6
250	635,0
260	660,4
270	685,8
288	731,5
290	736,6
300	762,0
356	904,2
414	1051,5
450	1143,0
566	1437,6

P	5,080
H	2,25
H <sub>1</sub>	1,25

L	
Code	Pitch length (mm)
86	218,6
124	314,3
150	381,0
173	438,1
187	476,2
202	514,4
210	533,4
225	571,5
240	609,6
255	647,7
270	685,8
285	723,9
300	762,0
322	817,9
345	876,3
367	933,4
390	990,6
420	1066,8
450	1143,0
480	1219,2
510	1295,4
540	1371,6
570	1447,8
600	1524,0

P	9,525
H	3,6
H <sub>1</sub>	1,9

H	
Code	Pitch length (mm)
230	584,2
240	609,6
270	685,8
300	762,0
330	838,2
360	914,4
390	990,6
420	1066,8
450	1143,0
480	1219,2
510	1295,4

P	12,7
H	4,3
H <sub>1</sub>	2,29

