

# **MEGAFLEX PU truly endless timing belts**



# MEGAFLEX PU truly endless timing belts



**MEGAFLEX TIMING BELTS** are manufactured in thermoplastic polyurethane, with continuous spiral steel cords.

This type of belt, developed by our Research & Development, offers good running characteristics and high traction loads.

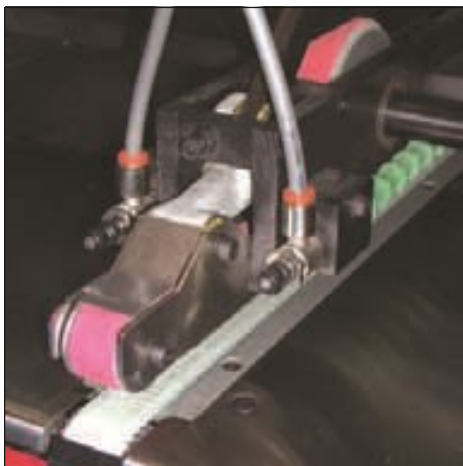
They are especially suited for power transmission and conveying with high loads and high speeds (up to 10.000 RPM).

The addition of a nylon coating on the teeth during production enhances the running properties for specific applications and reduces the noise frictional coefficient.

An extra thickness of special coating is also possible on the back of the belt offering extra protection against aggressive or heavy products.

Megaflex belts are truly endless, enabling them to deliver exceptional performance.

**MEGADYNE MEGAFLEX TIMING BELTS ARE AVAILABLE FROM 1.500 UP TO 22.700 mm LENGTH.**



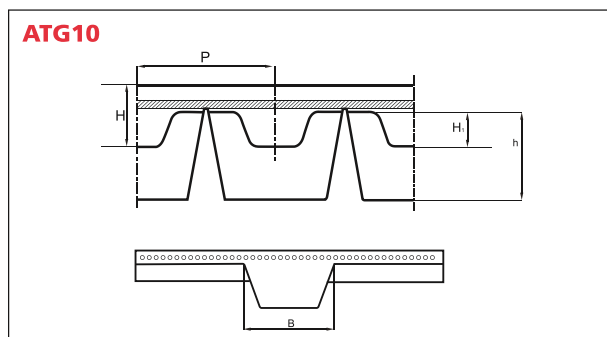
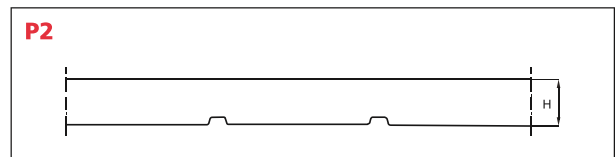
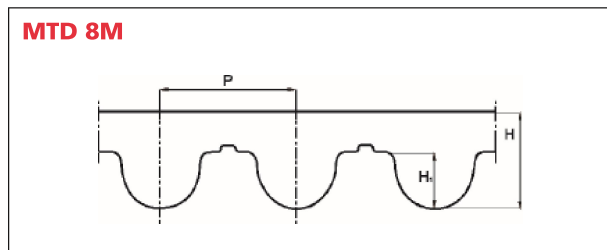
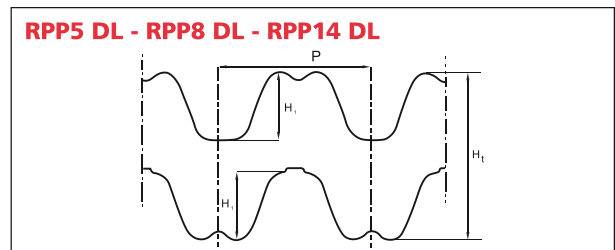
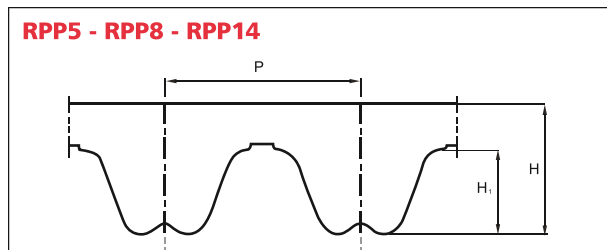
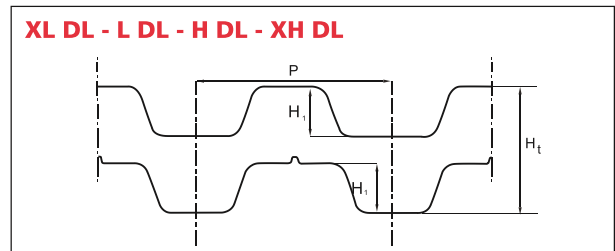
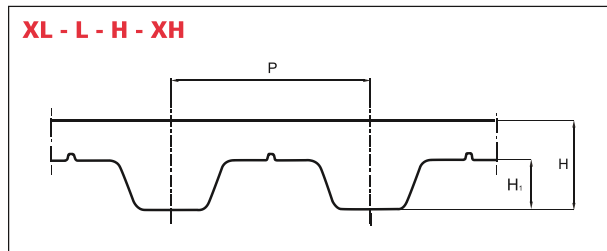
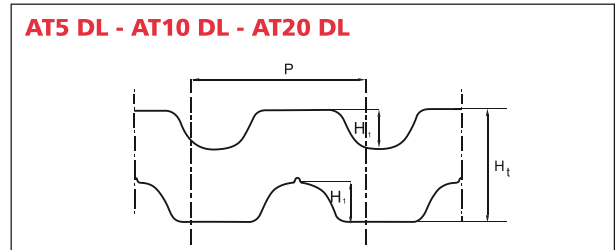
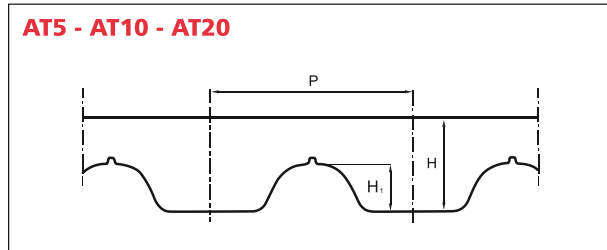
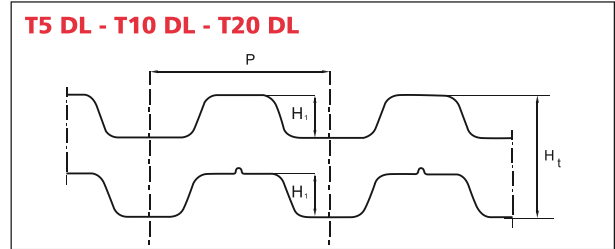
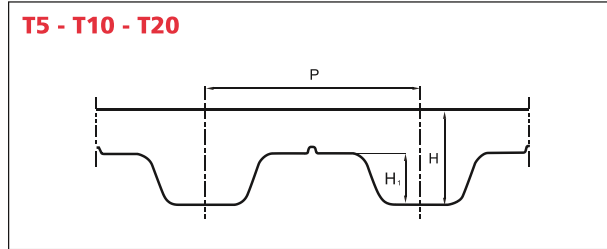
## **MEGAFLEX Special constructions**

- High flex cords
- (NFT) nylon fabric on the teeth (available from 1.900 mm long)
- Custom milling, grinding and drilling to specification
- Additional continuous coatings on the back of the belt in:
  - PU 85° ShA
  - Tenax 50° ShA
  - Linatex 40° ShA
  - Yellow PUR 60° ShA
  - Grey PUR 60° ShA
  - Neoprene rubber 70° ShA

Other hardnesses available on request.



# MEGAFLEX PU truly endless timing belts



<b>P2</b>	
Std. width (mm)	
25	
50	
75	
100	
150	

<b>ATG10 K13</b>	
Std. width (mm)	
10	
16	
25	
32	
50	
75	
100	
150	

<b>MTD 8M</b>	
Std. width (mm)	
10	
16	
25	
32	
50	
75	
100	
150	

P	2,0
---	-----

P	10
---	----

P	8
---	---

H	4,5
---	-----

H	5,6
---	-----

H1	2,5
----	-----

H1	3,4
----	-----

B	13
---	----

h	6,4
---	-----

# MEGAFLEX PU truly endless timing belts

T5/T5DL		T10/T10DL		T20/T20DL	
Std. width (mm)		Std. width (mm)		Std. width (mm)	
10		10		10	
16		16		16	
25		25		25	
32		32		32	
50		50		50	
75		75		75	
100		100		100	
150		150		150	
P	5	P	10	P	20
H	2,2	H	4,5	H	8
H <sub>i</sub>	1,2	H <sub>i</sub>	2,5	H <sub>i</sub>	5
H <sub>t</sub>	3,4	H <sub>t</sub>	7	H <sub>t</sub>	13



AVAFC - PU 85 shore A, extruded on back.

AT5/AT5DL		AT10/AT10DL		AT20/AT20DL	
Std. width (mm)		Std. width (mm)		Std. width (mm)	
10		10		10	
16		16		16	
25		25		25	
32		32		32	
50		50		50	
75		75		75	
100		100		100	
150		150		150	
P	5	P	10	P	20
H	2,7	H	4,5	H	8
H <sub>i</sub>	1,2	H <sub>i</sub>	2,5	H <sub>i</sub>	5
H <sub>t</sub>	3,9	H <sub>t</sub>	7	H <sub>t</sub>	13



NFT - Nylon fabric on teeth low friction and noise.

RPP5/RPP5DL		RPP8/RPP8DL		RPP14/RPP14DL	
Std. width (mm)		Std. width (mm)		Std. width (mm)	
10		10		10	
15		15		15	
20		20		20	
25		25		25	
50		50		50	
85		85		85	
100		100		100	
150		150		150	
P	5	P	8	P	14
H	3,8	H	5,4	H	10
H <sub>i</sub>	2	H <sub>i</sub>	3,2	H <sub>i</sub>	6
H <sub>t</sub>	5,2	H <sub>t</sub>	7,8	H <sub>t</sub>	14,5



Double teeth version.

XL/XLDL		L/LDL		H/HDL		XH/XHDL	
Std. width (mm)		Std. width (mm)		Std. width (mm)		Std. width (mm)	
12,7		12,7		12,7		12,7	
19,1		19,1		19,1		19,1	
25,4		25,4		25,4		25,4	
38,1		38,1		38,1		38,1	
50,8		50,8		50,8		50,8	
76,2		76,2		76,2		76,2	
101,6		101,6		101,6		101,6	
152,4		152,4		152,4		152,4	
P	5,08	P	9,525	P	12,7	P	22,225
H	2,3	H	3,6	H	4,3	H	11,2
H <sub>i</sub>	1,27	H <sub>i</sub>	1,9	H <sub>i</sub>	2,29	H <sub>i</sub>	6,35
H <sub>t</sub>	3,05	H <sub>t</sub>	4,58	H <sub>t</sub>	5,95	H <sub>t</sub>	15,49